



Operation Lair Buster

BRIEFING

Contents

Overall Situation.....	2
Weather	2
Flight & Weapon data	2
Mission Criteria	3
Comm Plan & Data Link.....	3
Summary	4
IFF	4
Ordenance.....	4
Enemy Threat/ INTEL	5
ROE	6
Code Words	6
Mandatory Calls:	6
NAVAIDS	7



Overall Situation

Third day into the conflict between DPRK and NATO. In order to establish air superiority, NATO Command as planned a surgical OCA Strike.

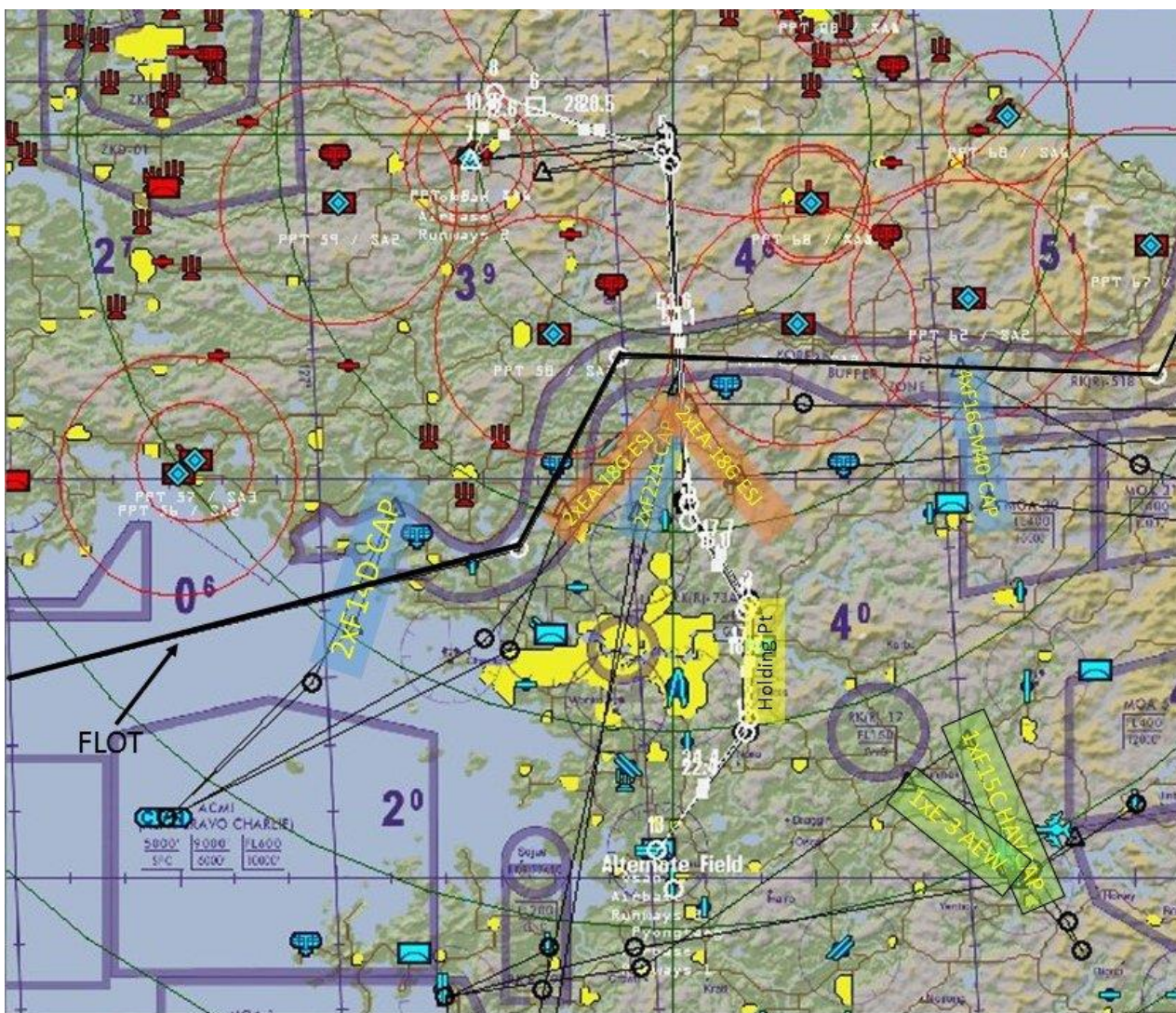
The 87th Stray Dogs VFW mission is to destroy Koksan's AB runways.

Weather

Conditions @	Take Off:	Target Area:	Landing:
Situation:	Sunny	Sunny	Sunny
Wind:	297 deg @ 9 kts	297 deg @ 9 kts	297 deg @ 9 kts
Temp:	12 deg C	12 deg C	12 deg C
Cloud Base:	33,000 ft MSL	33,000 ft MSL	33,000 ft MSL
Com Layer:	28,000 ft MSL	28,000 ft MSL	28,000 ft MSL

Flight & Weapon data

Flight Plan, Briefing and Ordnance





TO	AB	Callsign	Task	TGT	TOT	Pkg	Alt Field	AC N.º&Type
03:56:54	Seosan AB	Lynx3	HAVCAP	Dragnet6	04:09:56	2105	R110	1 x F-15C
03:57:52	Choongwon AB	Dragnet6	AEW/ABCC C	---	04:10:56	2105	R605	1 x E-3
05:33:57	Kangnung AB	Bulldog4	BARCAP	11nm NE Hwach'on	05:45:00	2119	Soksho AB	4 x F-16CM-40
05:34:04	Osan AB	Bulldog5	DEAD	SA-6 & AAA KAB	05:57:52	2099	Pyongtaeg AB	2 x F-16AM RNoAF
05:36:03	Osan AB	Weasel3	ESCORT	Viper3	05:39:55	2099	Pyongtaeg AB	2 x F-16AM RNoAF
05:38:24	Osan AB	Viper3	OCA Strike	Runways KAB	06:04:12	2099	Pyongtaeg AB	2 x F-16AM RNoAF
05:38:36	USS Roosevelt	Caddy7	EWS/ESJ	4nm E Yeonchoon	06:01:58	2115	USS Roosevelt	2 x EA-18G
05:39:15	Kunsan AB	Mirage2	BARCAP	2nm SE Hak Kyo-mal	06:00:00	2111	Seosan AB	2 x F-22A
05:43:04	USS Enterprise	Raven6	EWS/ESJ	Over R218	06:21:02	2115	USS Enterprise	2 x EA-18G
05:54:01	USS Enterprise	Willdcat1	BARCAP	11nm SW Onsu-ni	06:00:00	2113	USS Enterprise	2 x F-14D

Red: AI flights

Mission Criteria

Mission Success: Both runways destroyed.

Mission Partial Success: one runway destroyed.

Mission Failure: Both runways active.

Comm Plan & Data Link

Comm Ladder				
Agency:	Callsign:	Uhf [Chnl]:	Vhf [Chnl]:	Notes:
Intra-Flight:	Viper3 Weasel2 Bulldog5	---	143.775 MHz [15] 138.725 MHz [16] 139.775 MHz [17]	Flight Management Comms
Guard:	None	243.000 MHz [13]	121.500 MHz [13]	Distress/Emergency
Common:	None	339.750 MHz [14]	123.500 MHz [14]	Advisory/UNICOM
Base Ops:	None	272.700 MHz [1]	--	Homeplate Ops.
Check-In:	Dragnet6	341.625 MHz [5]	--	AWACS:Global Check-In
Tactical:	Dragnet6	316.000 MHz [6]	--	AWACS:Pckg Comms
Dep Atis:	Osan ATIS	--	132.125 MHz	Departure Airbase
Dep Ground:	Osan Ground	253.700 MHz [2]	--	Departure Airbase
Dep Tower:	Osan Tower	308.800 MHz [3]	122.100 MHz [3]	Departure Airbase
Dep Departure:	Osan Departure	306.300 MHz [4]	--	Departure Airbase
Arr Atis:	Osan ATIS	--	132.125 MHz	Recovery Airbase
Arr Approach:	Osan Approach	306.300 MHz [4]	--	Recovery Airbase
Arr Tower:	Osan Tower	308.800 MHz [3]	122.100 MHz [3]	Recovery Airbase
Arr Ground:	Osan Ground	253.700 MHz [2]	--	Recovery Airbase
Alt Atis:	Pyongtaeg ATIS	--	128.250 MHz	Alternate Airbase
Alt Approach:	Pyongtaeg App.	363.100 MHz [10]	--	Alternate Airbase
Alt Tower:	Pyongtaeg Tower	257.800 MHz [11]	122.500 MHz [11]	Alternate Airbase
Alt Ground:	Pyongtaeg Ground	229.700 MHz [12]	--	Alternate Airbase



Summary


Callsign	VHF	UHF	IDM	TCN
Viper3	15	6	1	1Y/64Y
Weasel3	16	6	2	2Y/65Y
Bulldog5	17	6	3	3Y/66Y
Ground	UHF 2/9			
Tower	UHF3/8			
Departure/Arrival	UHF 4/7			

IFF

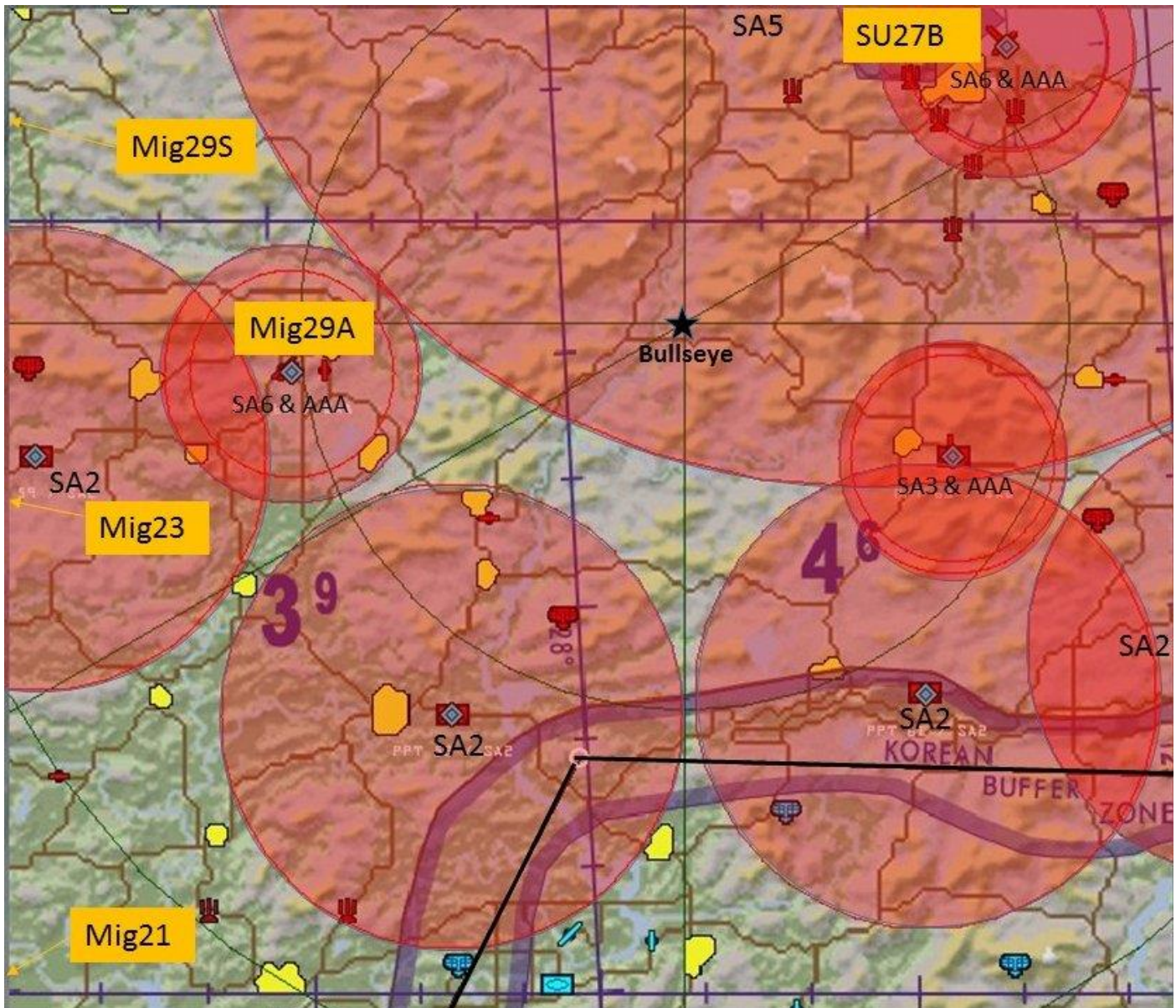
GENERAL													
Initial STAT Settings:		Modes Active: M124			Codes:		M1: 73			M2: 0454		M3: 6554	
M4 Validity Time (Until):		Key A: Day4 00:00			Key B: Day5 00:00								
IFF Policy:		M1: per team			M2: per aircraft		M3: per aircraft						
Code Change Setting:		TIM											
TIME EVENTS													
Rot/day:	04:00	05:00	06:00	07:00	08:00	09:00	10:00	11:00	12:00	13:00	14:00	15:00	04:00
M1:	24	43	71	62	61	11	02	52	11	10	12	12	50
M3:	4	4354	5130	7004	7554	6104	3630	2054	5430	1104	0254	4330	5254
M4:	1	A	A	A	A	A	A	A	A	A	A	A	A
POS EVENTS													
Ingress: M124 / ----		Egress: M124 / ----											

Ordnance

Callsign:	Flt Lead:	Wing Two:	Elem Lead:	Elem Two:
Viper3	- Viper31 -	- Viper32 -		
	510 x 20mm M61	510 x 20mm M61		
	2 x AIM-120B AMRAAM	2 x AIM-120B AMRAAM		
	2 x IRIS-T	2 x IRIS-T		
	2 x GBU-31(v)3/B /AP	2 x GBU-31(v)3/B /AP		
	1 x Tank 300gal	1 x Tank 300gal		
	1 x AN/AAQ-33 SNIPER	1 x AN/AAQ-33 SNIPER		
Weasel3	- Weasel31 -	- Weasel32 -		
	510 x 20mm M61	510 x 20mm M61		
	4 x AIM-120B AMRAAM	4 x AIM-120B AMRAAM		
	2 x IRIS-T	2 x IRIS-T		
	2 x Tank 370gal	2 x Tank 370gal		
Bulldog5	- Bulldog51 -	- Bulldog52 -		
	510 x 20mm M61	510 x 20mm M61		
	4 x AIM-120B AMRAAM	4 x AIM-120B AMRAAM		
	8 x GBU-39/B SDB /HE	8 x GBU-39/B SDB /HE		
	2 x Tank 370gal	2 x Tank 370gal		
	1 x AN/AAQ-33 SNIPER	1 x AN/AAQ-33 SNIPER		

<div>  <div> 87TH STRAYDOGS VIRTUAL FIGHTER WING <i>Since 1999</i> </div> </div>				
Callsign	Distance	Gross Weight	Drag Factor	Fuel
Viper3	263	33973	129	9202
Weasel3	263	33572	101	12194
Bulldog5	290	37011	220	12194

Enemy Threat/ INTEL



Air-to-Air Threats:

Enemy CAP aircraft are likely to be operating within operation area.

Surface-To-Air Threats:

There are no known enemy air defense assets along your flight path.



ROE

1. Viper31 is Mission Commander;
2. All flight paths are unchangeable;
3. Load out is changeable;
4. Mission begins in Rampstart.

Code Words

- Mission Abort – ShutDown
- Flight Abort – EagleShot
- Element Abort – BrokenWing
- Mission Success – LairBusted
- Mission Failure – HealthyLair
- At Holding Station – On Chair
- Over FLOT – In/Out Woods
- In/Out of TGT Area – In/Out Playground

Mandatory Calls:

- At Holding Station
- Over FLOT
- In/Out of TGT (Strike only)



87TH STRAYDOGS VIRTUAL FIGHTER WING *Since 1999*

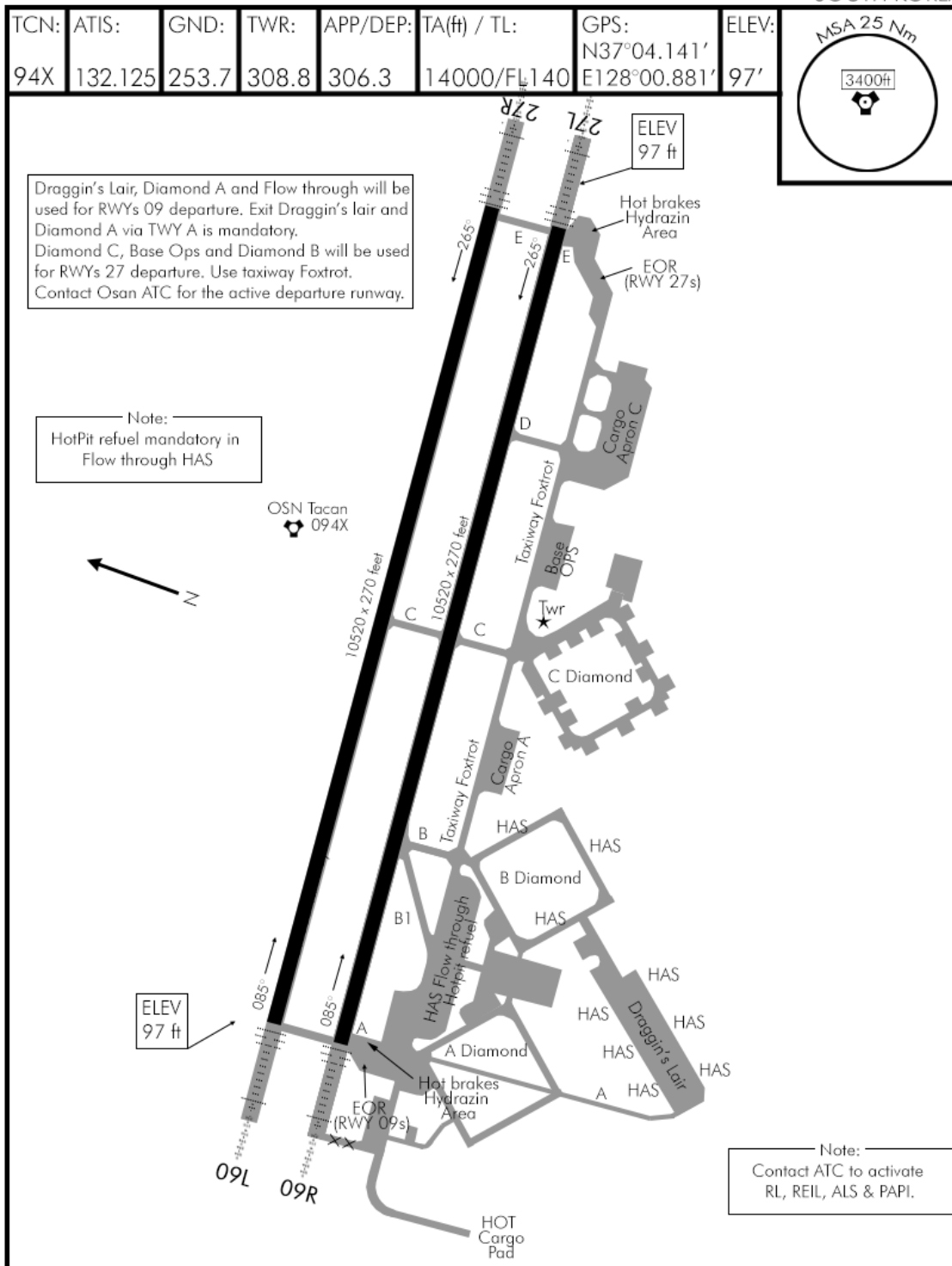
NAVAIDS

KOREAN NAVIGATION VOLUME

AIRPORT DIAGRAM

Date: 7 May 2018

OSAN AB (RKSO)
SOUTH KOREA



AIRPORT DIAGRAM

© COMBATSIM CHECKLISTS 2018

OSAN AB (RKSO)
SOUTH KOREA

NOT FOR REAL NAVIGATION - FALCON 4 BMS ONLY



87TH STRAYDOGS

VIRTUAL FIGHTER WING

Since 1999

KOREAN NAVIGATION VOLUME

DRAGGIN ONE DEPARTURE

Date: 14 Dec 2017

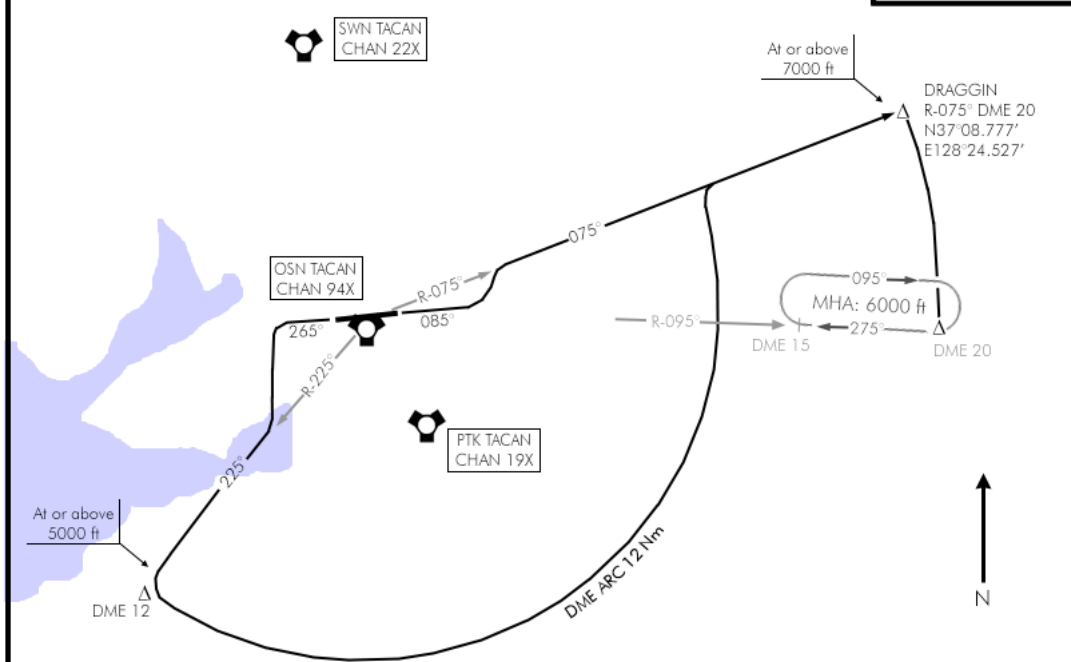
OSAN AB (RKSO)
SOUTH KOREA

TACAN:	TWR:	APP/DEP:	TRANS. LEVEL:	TRANS. ALT:	GPS:	ELEV:	
094X	308.8	306.3	FL140	14.000ft	N37°04.141' E128°00.881'	97'	

EMERG SAFE ALT 100 NM: 7700ft

MSA 25 Nm

3400ft



DEPARTURE ROUTE DESCRIPTION

TAKE-OFF RWY 09: Climb on track 085° until 600', then climbing LEFT turn to intercept R-075° outbound OSN. Proceed to DRAGGIN. Cross DRAGGIN at or above 7000', Thence...

TAKE-OFF RWY 27: Climb on track 265° until 600', then climbing LEFT turn to intercept R-225° outbound OSN. Lead turn LEFT to ARC DME 12 OSN. Enter the arc at or above 5000'. Join R-075° outbound OSN and proceed to DRAGGIN. Cross DRAGGIN at or above 7000'. Thence, ...

If not VFR on top by DRAGGIN, intercept the OSN 20 DME ARC Southbound and hold as published at DME20 on R-095° OSN tacan and climb to VFR on top.

DRAGGIN ONE DEPARTURE

© COMBATSIM CHECKLISTS 2017

NOT FOR REAL NAVIGATION - FALCON 4 BMS ONLY

OSAN AB (RKSO)
SOUTH KOREA



87TH STRAYDOGS VIRTUAL FIGHTER WING

Since 1999

KOREAN NAVIGATION VOLUME

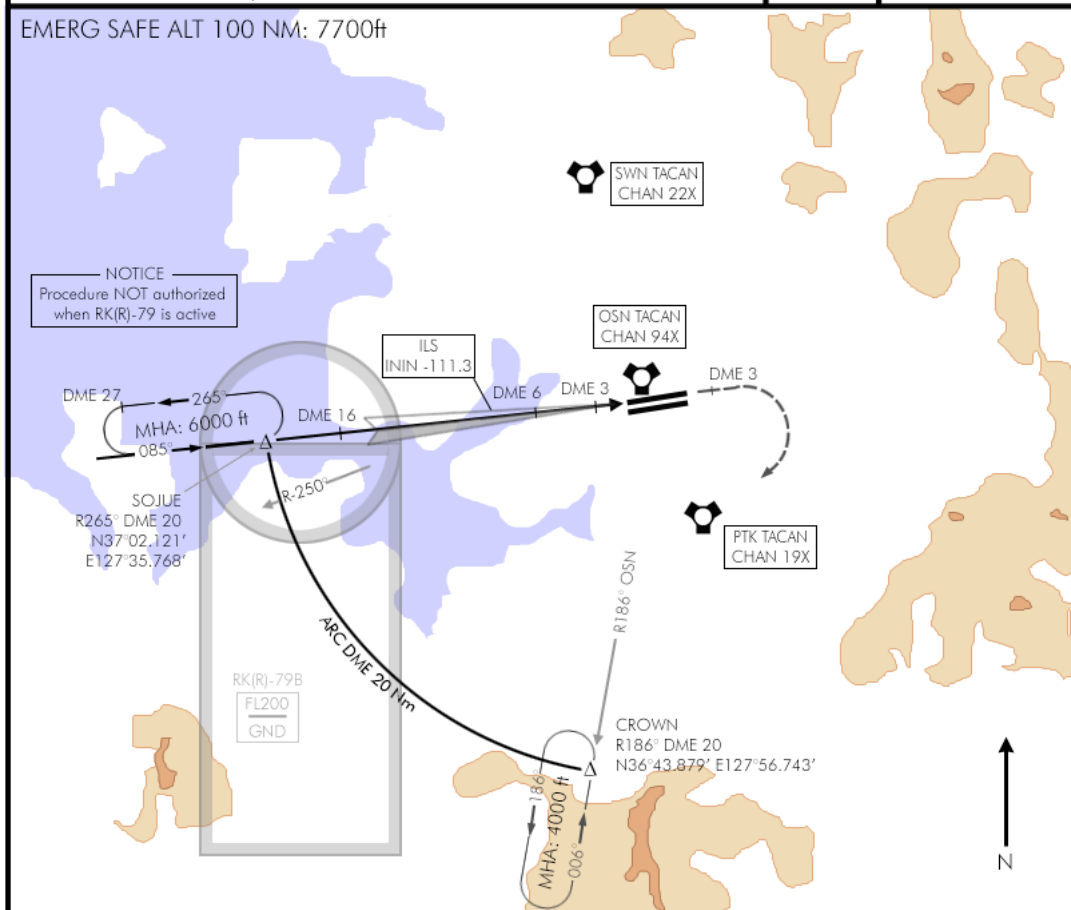
ILS RWY 09L

Date: 14 Sept 2018

OSAN AB (RKSO)
SOUTH KOREA

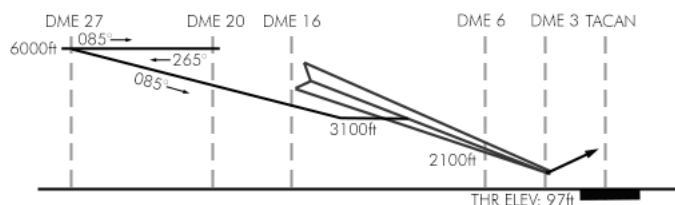
TCN:	ATIS:	APP/DEP:	TWR:	ILS:	ILS DA(H):	LOC:	GPS:	ELEV:	MSA 25 Nm
94X	132.125	306.3	308.8	111.3	297'(200')	085°	N37°04.141' E128°00.881'	97'	
MISSED APPROACH: Climb Runway heading to 3 DME, then RIGHT climbing turn to track 230°. Intercept and proceed via R-186 to CROWN and hold as published.								ALSF-1 PAPI	

EMERG SAFE ALT 100 NM: 7700ft



Transition Level : FL 140

Transition Altitude : 14000ft



MINIMA:

ILS: 297'(200'AGL)
Vis: 200ft-800m*
LOC: 497'(400'AGL)
Vis: 400ft-1600m**
Circling: 897'(800'AGL)
Vis: 800ft-2000m
*When ALS inop, increase vis to 1200m
**When ALS inop, increase vis to 2000m

ILS RWY 09L

NOT FOR REAL NAVIGATION - FALCON 4 BMS ONLY

© COMBATSIM CHECKLISTS 2017

OSAN AB (RKSO)
SOUTH KOREA



87TH STRAYDOGS VIRTUAL FIGHTER WING

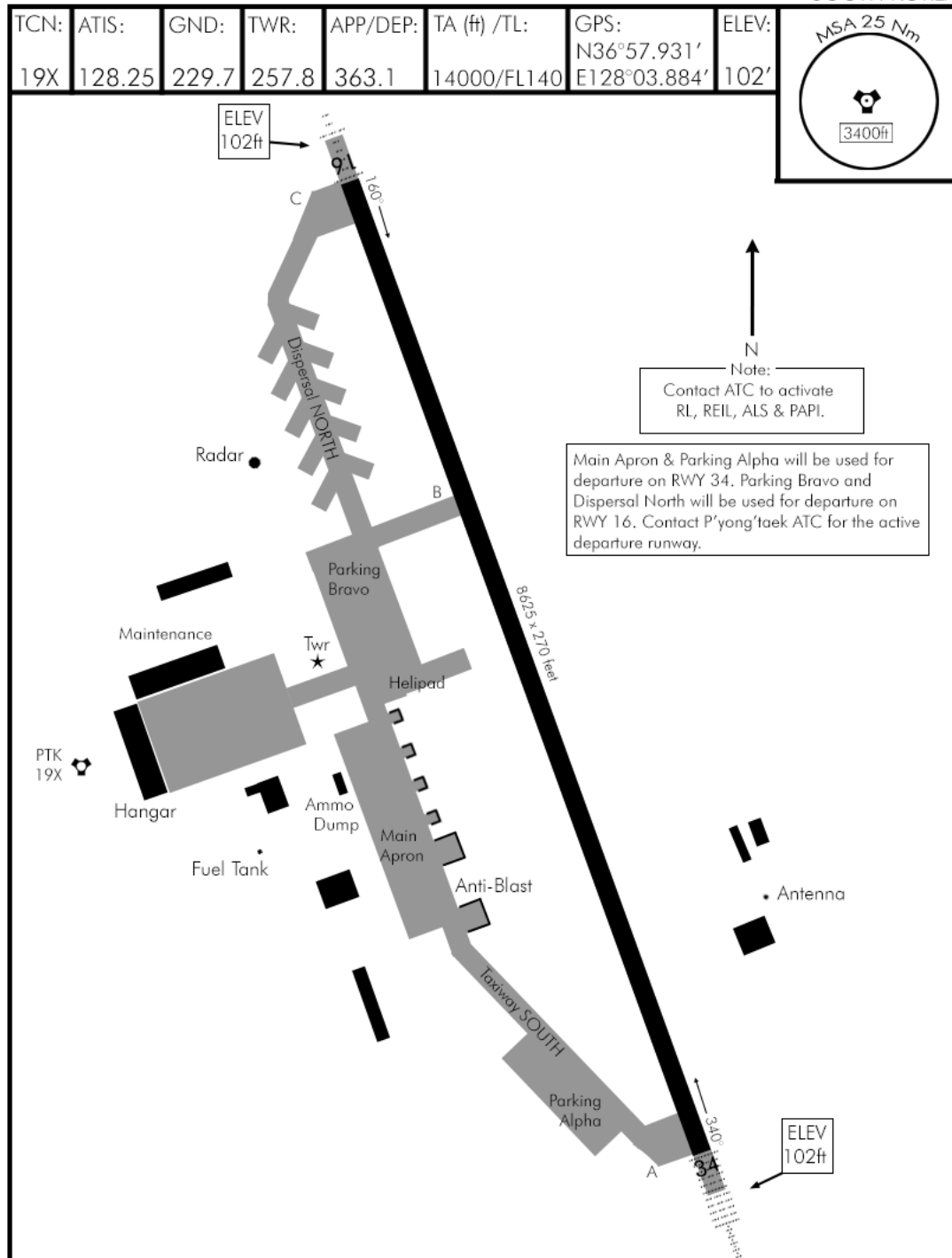
Since 1999

KOREAN NAVIGATION VOLUME

AIRPORT DIAGRAM

Date: 27 Sept 2018

P'YONG'TAEK (RKSG)
SOUTH KOREA



AIRPORT DIAGRAM

© COMBATSIM CHECKLISTS 2018

P'YONG'TAEK (RKSG)
SOUTH KOREA

NOT FOR REAL NAVIGATION - FALCON BMS 4 ONLY